

Biotinylated Human PD-L1/B7-H1 Protein

Cat. No. PDL-HM410B

Description

Source	Recombinant Biotinylated Human PD-L1/B7-H1 is expressed from HEK293 with His tag and Avi tag at the C-Terminus. It contains Phe19-Arg238.
Accession	Q9NZQ7-1
Molecular Weight	The protein has a predicted MW of 28.1 kDa. Due to glycosylation, the protein migrates to 35-45 kDa based on Bis-Tris PAGE result.
Endotoxin	Less than 1EU per µg by the LAL method.
Purity	> 95% as determined by Bis-Tris PAGE > 95% as determined by HPLC

Formulation and Storage

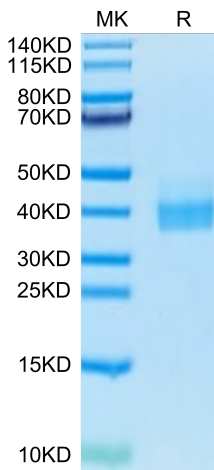
Formulation	Lyophilized from 0.22µm filtered solution in PBS (pH 7.4). Normally 8% trehalose is added as protectant before lyophilization.
Reconstitution	Centrifuge the tube before opening. Reconstituting to a concentration more than 100 µg/ml is recommended. Dissolve the lyophilized protein in distilled water.
Storage	-20 to -80°C for 12 months as supplied from date of receipt. -80°C for 3 months after reconstitution. Recommend to aliquot the protein into smaller quantities for optimal storage. Please minimize freeze-thaw cycles.

Background

B7-H1, also known as PD-L1 and CD274, is an approximately 65 kDa transmembrane glycoprotein in the B7 family of immune regulatory molecules. PD-L1 has been identified as the ligand for the immunoinhibitory receptor programmed death-1(PD1/PDCD1) and has been demonstrated to play a role in the regulation of immune responses and peripheral tolerance.

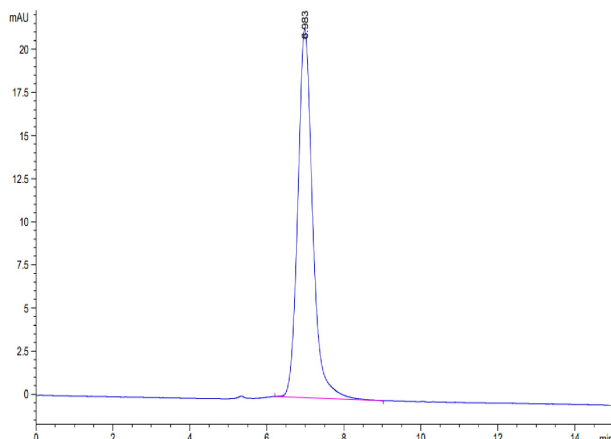
Assay Data

Bis-Tris PAGE



Biotinylated Human PD-L1 on Bis-Tris PAGE under reduced condition. The purity is greater than 95%.

SEC-HPLC



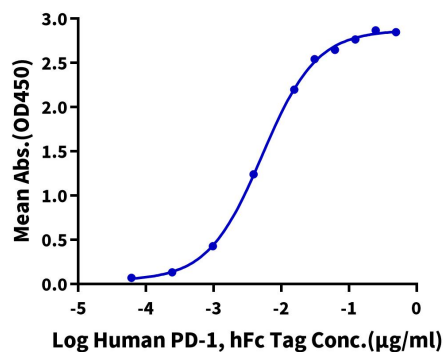
The purity of Biotinylated Human PD-L1 is greater than 95% as determined by SEC-HPLC.

Assay Data

ELISA Data

Biotinylated Human PD-L1, His Avi Tag ELISA

0.1µg Biotinylated Human PD-L1, His Avi Tag Per Well

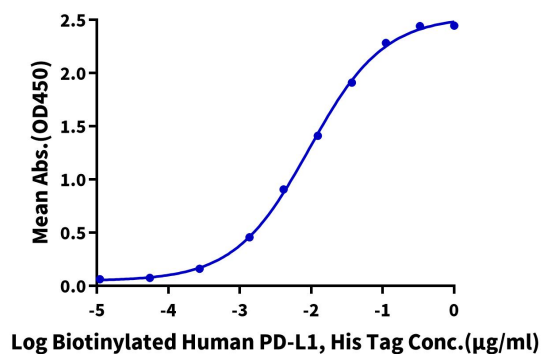


Immobilized Biotinylated Human PD-L1, His Tag at 1µg/ml (100µl/well) on the streptavidin precoated plate (5µg/ml). Dose response curve for Human PD-1, hFc Tag with the EC50 of 5.2ng/ml determined by ELISA (QC Test).

ELISA Data

Biotinylated Human PD-L1, His Tag ELISA

0.05µg Anti-PD-L1 Antibody, hFc Tag Per Well



Immobilized Anti-PD-L1 Antibody, hFc Tag at 0.5µg/ml (100µl/Well) on the plate. Dose response curve for Biotinylated Human PD-L1, His Tag with the EC50 of 9.4ng/ml determined by ELISA.